

**FEATURES:**

- ◆ Compact 400W with 1U height Power Density: 11.11 watts/cu in
- ◆ Built-in Remote On-Off, Power Good, Fan Fail Alarm
- ◆ 5/ 12/ 24V Dual Output Optional Combinations
- ◆ Power Factor Corrected to EN61000-3-2 class D
- ◆ Variable Fan Speed & Low Acoustical Noise
- ◆ High Quality & Reliable Component Usage
- ◆ Approved to UL CUL TUV CB and CE
- ◆ 4 - Mechanical Options
- ◆ Full Range AC Input



U Type: 6(L) x 4(W) x 1.5(H)"



E Type: 7(L) x 4(W) x 1.6(H)"



F Type: 6(L) x 4(W) x 2(H)"



C Type : 6(L) x 4(W) x 1.57(H)"

**PRODUCT SPECIFICATIONS:**

**Input Voltage:** 90 ~ 264Vac full range, 47 ~ 63Hz.  
**Input Current:** 8A at 90Vac.  
**Inrush Current:** Max. 70A@230Vac & 35A@115Vac; both under cold start conditions.  
**Power Factor Correction:** >0.9 @ Vin: 230Vac full load.  
**Transient Response:** Returns to within 1% in less than 2.5mS for a 50% load change and the peak transient does not exceed 5%.  
**Overshoot:** Turn-on & off overshoot < 5% over nominal voltage.  
**Efficiency:** 75% minimum (Measuring at 230V and full load).  
**Turn On Delay:** 1.5 second maximum at 120 Vac.  
**Hold Up Time:** 16 Msec minimum at 120 VAC and 75% of rated maximum load.  
**Adjustability:** Output user adjustable +/-5% minimum.  
**Fan Drive:** 12VDC/300mA offering to drive an external fan.  
**Fan Fail (FF) Alarm:** Designated as FF on pin 3 of CN1 to monitor the status of fan. This signal is an open collector output rated for 15VDC/5mA sink current maximum, it will go high when a fan failure is detected.  
**Remote On-Off:** Designated as INH on pin4 of CN1, requires a low signal to inhibit output.  
**Power Supply On:** Green LED designated as LED1 on the PCB.  
**Power Good:** Designated as PG on CN1 and TTL high 100-500mS after DC regulation. It goes low at least 1mS before loss of regulation.  
**Input Fusing Protection:** One T8A/250V fuse inserted in primary.  
**Over-Power Protection:** 110~140% of I-Max; Auto-recovery.  
**Short Circuit Protection:** Trip without damage and auto-recovery.  
**Over Voltage Protection:** Unit latching down when output exceed 130% and recycle AC input to reset.  
**Over-Temperature Protection:** Unit protected of excessive operating ambient 110 °C±5 °C, and automatic recovery.  
**Operating Temperature:** 0°C to 70°C ambient, de-rating at 2.5% per degree from 50°C to 70°C.  
**Switching Frequency:** PFC 68 kHz, PWM 55 kHz for D1224 & 50 kHz for o''



**Storage Temperature:** -20 to 85 °C.  
**Operating Humidity:** 5% to 90% RH, Non-condensing.  
**Storage Humidity:** 5% to 95% RH, Non-condensing.  
**EMC:** EN55032 class B conducted / radiated, EN61000-3-2, EN61000-3-3; EN55024 (IEC61000-4-2, IEC61000-4-3, IEC61000-4-4, IEC61000-4-5, IEC61000-4-6, IEC61000-4-8, IEC61000-4-11).  
**Vibration:** 5 ~ 50 Hz, acceleration 7.35 m/s\*s on X,Y and Z Axis.  
**Safety Regulation:** IEC/EN/UL 62368-1  
**Leakage Current:** < 3.5mA @ 264Vac.  
 (optional for 500uA max. at 240Vac / 300uA max. at 120Vac input)  
**HI-POT Test:** 1500 VAC input line to chassis (10mA DC cut off current); Isolating 3000VAC primary to secondary windings; Primary to core 1500VAC. All for 3 sec.  
**Grounding Test:** Apply 25 A from ground pin of the three prong plug to the far most earth. Max allowable resistance 0.1 ohm.  
**Warranty:** 2 years.  
**MTBF:** 100000 Hrs (according to MIL-HBK-217F) at 30 °C .  
**Cooling:**  
 Internal fan is provided.  
**Burn in:** 45 +/- 5 degree C for 1 hour @230Vac with full load.  
**Enclosure:**  
 U Type: 6(L) x 4(W) x 1.5(H) inches.  
 U Type with top cover option: 6(L) x 4(W) x 1.57(H) inches.  
 E Type: 7(L) x 4(W) x 1.6(H) inches.  
 F Type: 6(L) x 4(W) x 2(H)inches.  
**Weight:** Maximum weight is 800g.

**OUTPUT VOLTAGE / CURRENT RATING CHART: Measured at output power connector.**

Model Number	Output Voltage	Max. Output Current		Regulation	Ripple & Noise
		Type U & E & F (force air)	Type U, C (Convection)		
PRL0602DNx-0512	V1:+5V	30A	15A	+/- 5%	1%
	V2:+12V	20.83A	13.33A	+/- 5%	1%
PRL0602DNx-0524	V1:+5V	30A	15A	+/- 5%	1%
	V2:+24V	10.42A	6.67A	+/- 5%	1%
PRL0602DNx-1224	V1:+12V	20.83A	12.5A	+/- 5%	1%
	V2:+24V	10.42A	8.33A	+/- 5%	1%

**Note:**

- \* PRL0602DN series are designated as PRL0602DNx-y where x can be U (U-Chassis), C (U-chassis with top vented cover), E (Enclosed Type with side built-in fan) or F (Enclosed Type with top built-in fan); y can be 0512, 0524, 1224.
- For models U chassis type which need external forced airflow min. 26.84 CFM to achieve maximum power.
- Type U, E & F with forced air cooling: Total combined power of V1 and V2 not to exceed 400W for PRL0602DNx-1224 and 320W for other models.
- Type U & C with convection cooling: Total combined power of V1 and V2 not to exceed 200W for RL0602DNx-1224 and 180W for other models.
- \* Ripple and noise is measured from 10KHZ to 20MHz bandwidth at output with parallel 0.1µF ceramic and 22µF electrolytic capacitors.
- \* 10% minimum load is required to maintain the ripple and regulation.
- \* Output is fully isolated.

**OUTLINE DRAWING:**

**Input and Output Connector (CN2):**

Terminal block: Howder Part No. HD-121-7P or Molex: Mating JST VH series.  
PCB labeling: L = Line; N = Neutral; G = Chassis Ground.

**Output Pin Assignment:** (See table in right).

**Mounting Inserts:** 6 Places M4X0.7. Maximum Penetration 2mm sees outline drawing for location.

**Logic Signal Connector (CN1):**

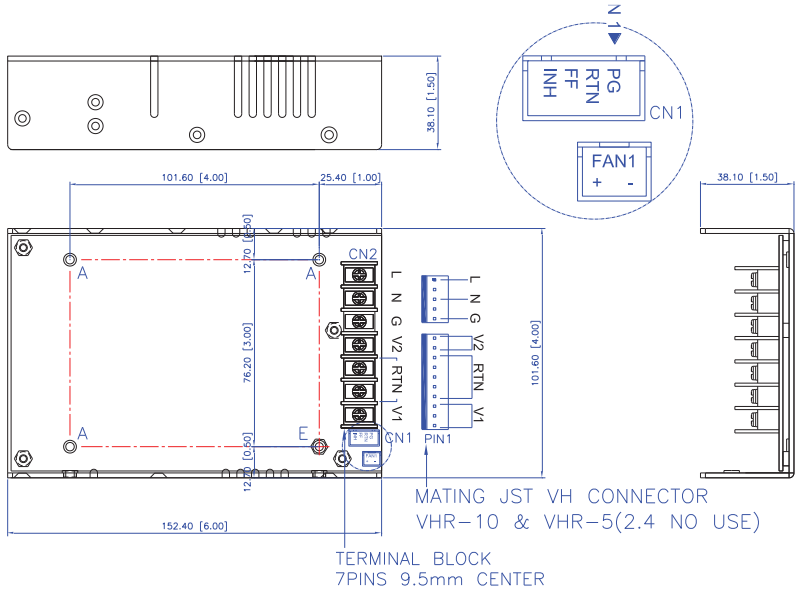
Mating: JST XHP-4 or equivalent (CHYAO SHIUNN JS-2001-04);  
Mating Pins: JST SXH-002T-P0.6 FOR AWG 30 to 26.

**Fan Driver Connector (FAN2):**

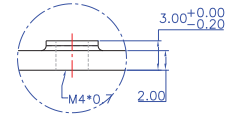
12VDC/300mA is available to drive an external fan. Mating: JST XHP-2 (2 pins 0.98 pitch) or equivalent (CHYAO SHIUNN JS-2001-02).

Howder	Molex
Pin 1: V1	Pins 1 ~ 3: V1
Pin 2 ~ 3: RTN	Pins 4 ~ 8: RTN
Pin 4: V2	Pins 9 ~ 10: V2
Pin 5: GND	Pin 12: GND
Pin 6: Neutral	Pin 14: Neutral
Pin 7: Line	Pin 16: Line

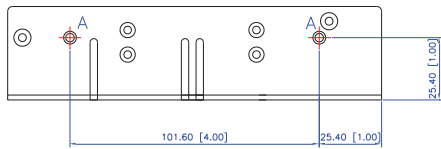
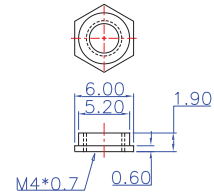
**PRL0602DNU Series (U-Chassis Type): 6(L) x 4(W) x 1.5(H) inches; Weight: 600g.**



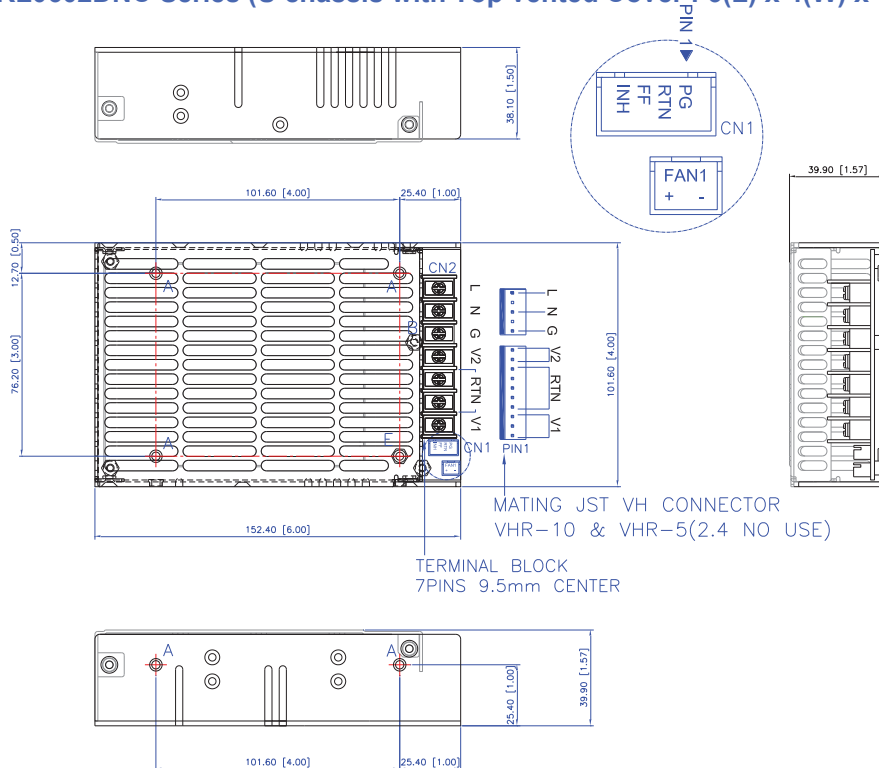
A 4:1 M4x0.7 TAP



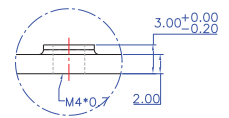
E 4:1 (1X)ZN-PLATED



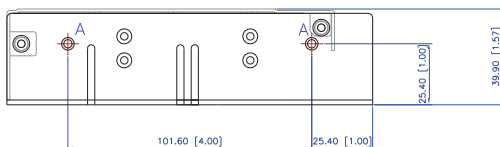
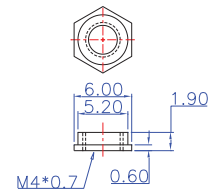
**PRL0602DNC Series (U chassis with Top vented Cover : 6(L) x 4(W) x 1.57(H) inches; Weight: 650g.**



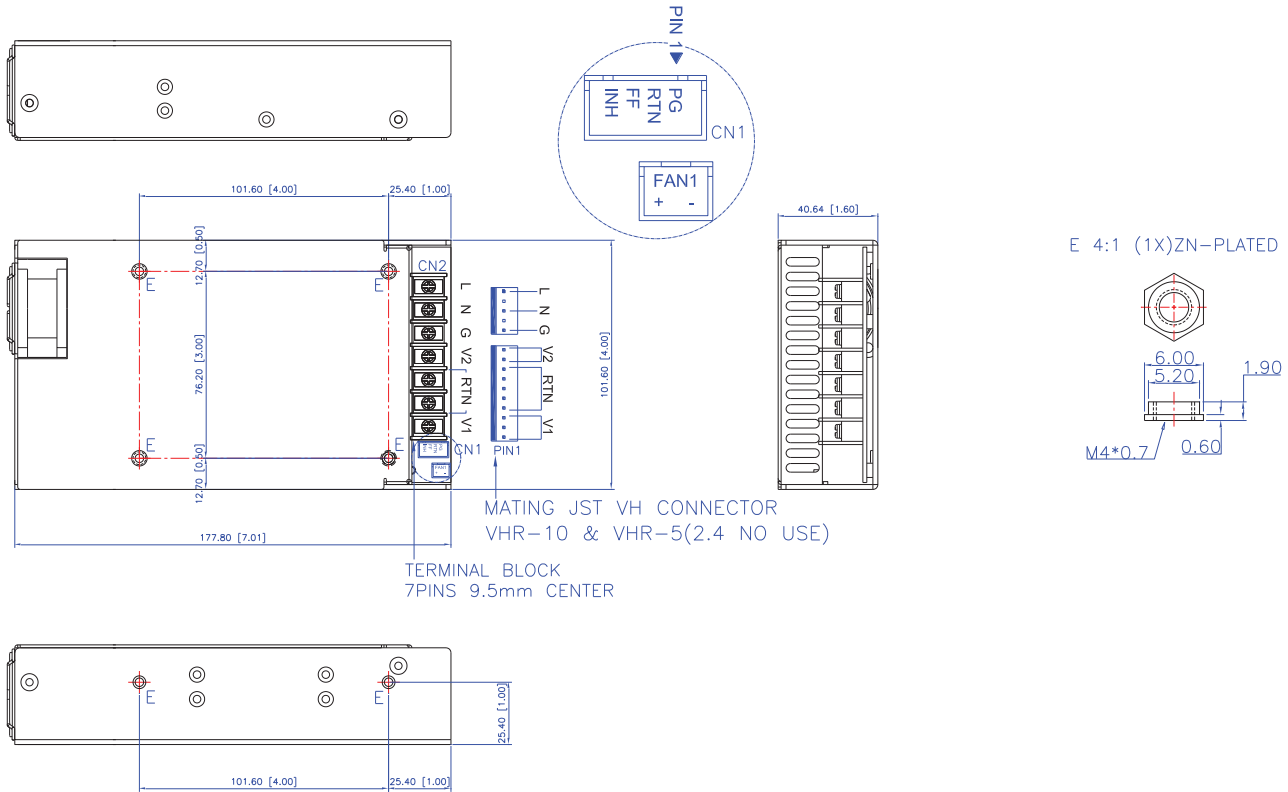
A 4:1 M4x0.7 TAP



E 4:1 (1X)ZN-PLATED



**PRL0602DNE Series (Enclosed with Side built-in Fan Type): 7(L) x 4(W) x 1.6(H) inches; Weight: 750g.**



**PRL0602DNF Series (Enclosed with Top built-in Fan Type): 6(L) x 4(W) x 2(H) inches; Weight: 800g.**

